

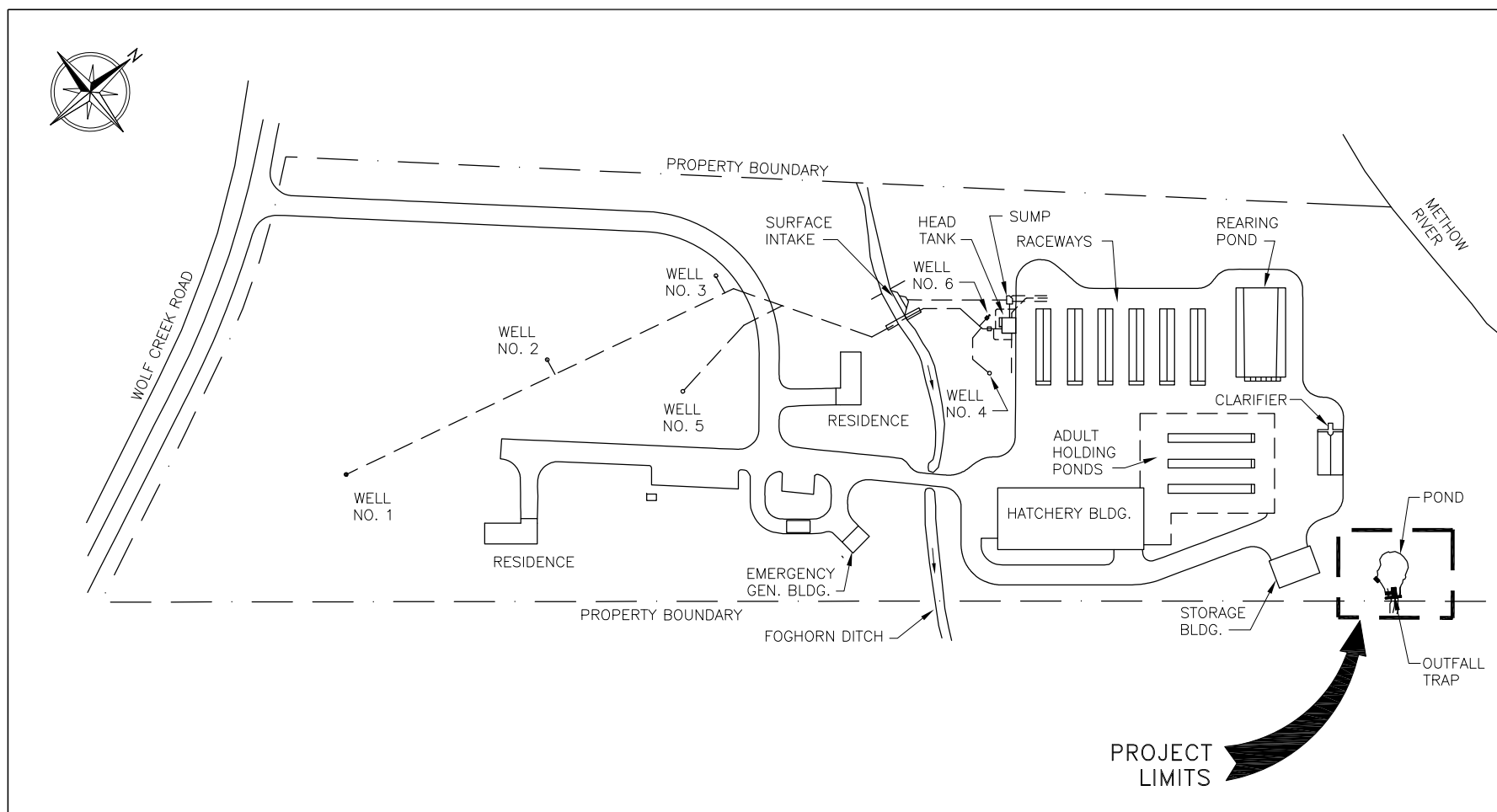


Public Utility District

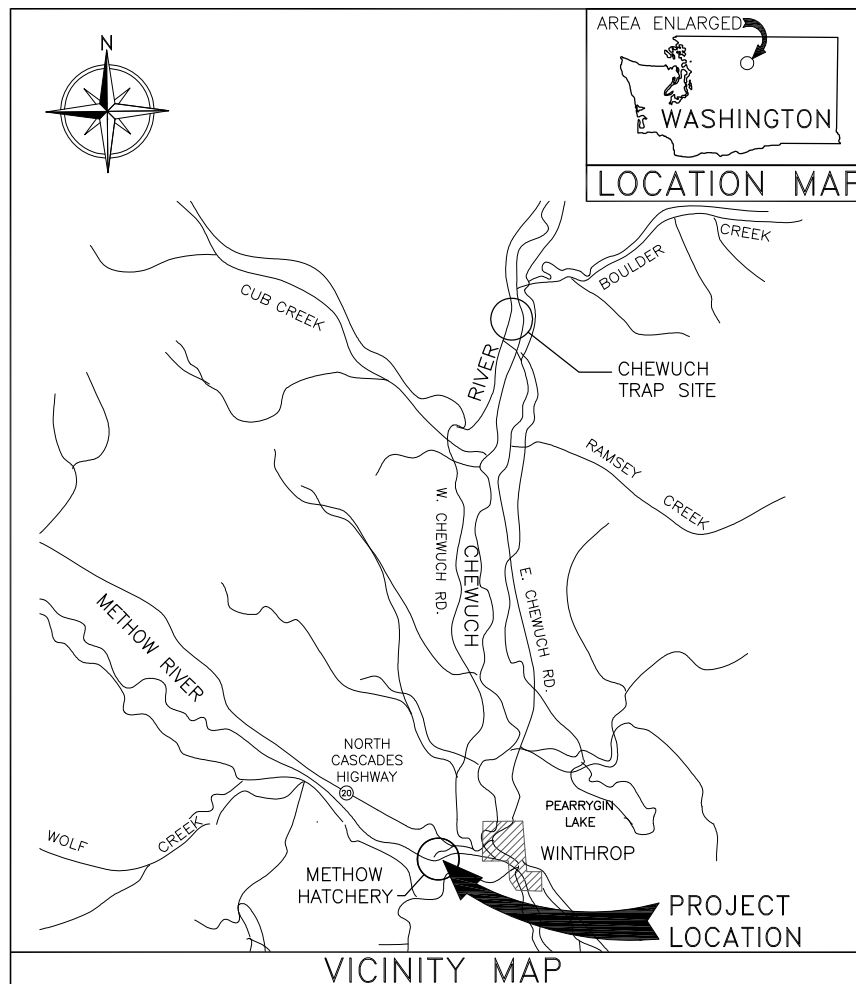
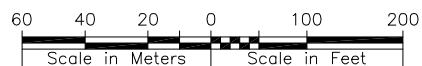
No. 1 of Douglas County

Methow Spring Chinook Hatchery OUTFALL ADULT TRAP MODIFICATIONS

DRAWING SET INDEX	
DWG. NUMBER	DESCRIPTION
X643-06-6200-DC-101	SITE PLAN AND INDEX
X643-06-6200-DC-102	POND DEWATERING PLAN
X643-06-6200-DC-103	DEMOLITION PLAN
X643-06-6200-DC-104	GENERAL ARRANGEMENT
X643-06-6200-DS-105	SECTIONS - 1
X643-06-6200-DS-106	SECTIONS - 2

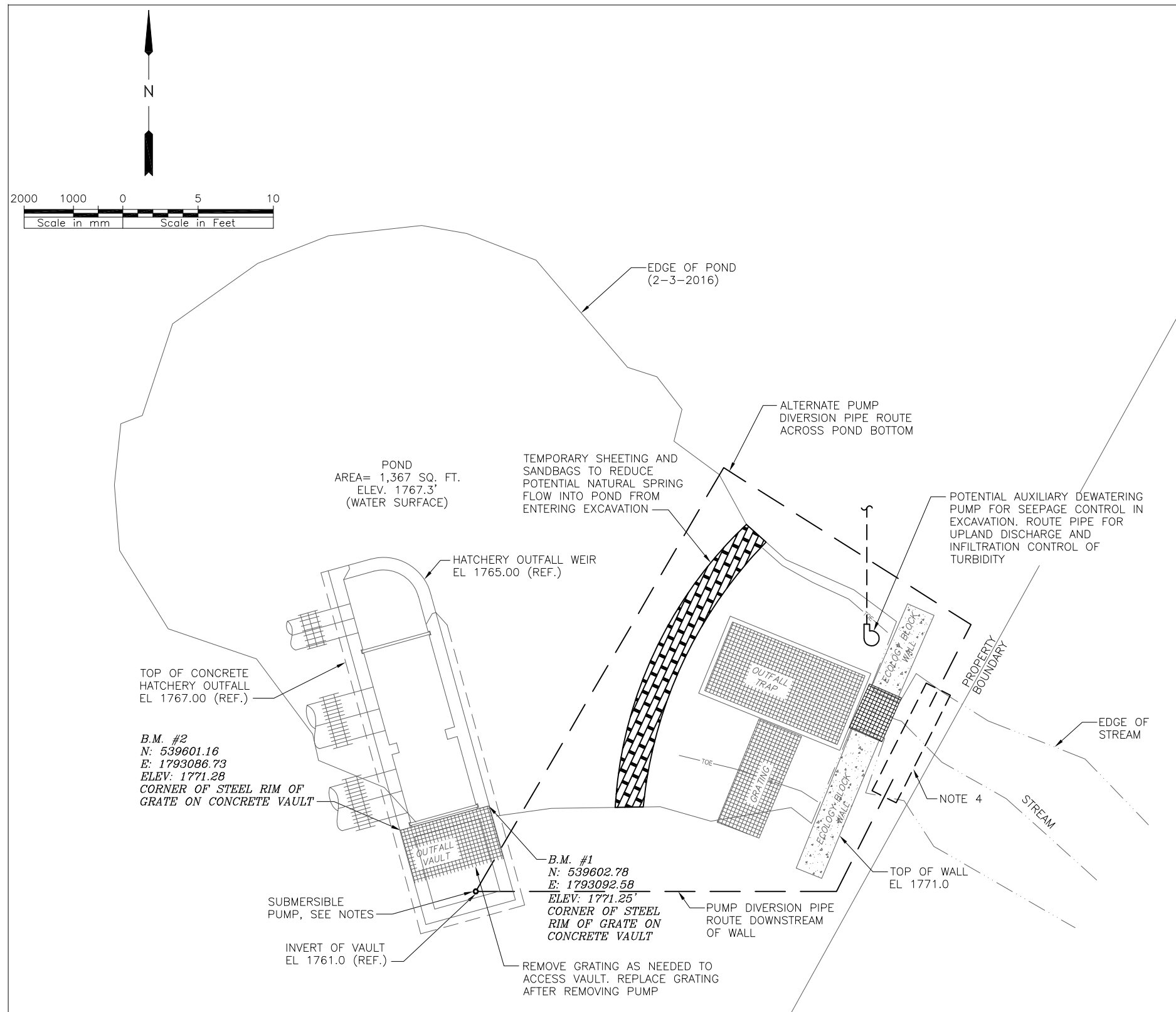


HATCHERY - SITE PLAN



ISSUED FOR CONSTRUCTION	RWR	DLA	JMS		
REV. NO. 11/23/16	REVISION DESCRIPTION	BY	CHK	JOB ENG	ENG PROJ
Public Utility District No. 1 of Douglas County WELLS HYDROELECTRIC PROJECT METHOW SPRING CHINOOK HATCHERY OUTFALL ADULT TRAP MODIFICATIONS SITE PLAN AND INDEX					
DESIGNED: JMS	DRAWN: RWR	CHECKED: DLA	DATE: 11/2016	REVISION: 0	
		DRAWING NUMBER: X643-06-6200-DC-101 SCALE: AS NOTED SHEET: 01 OF 06			

11-23-16

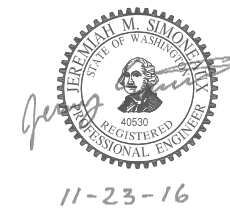


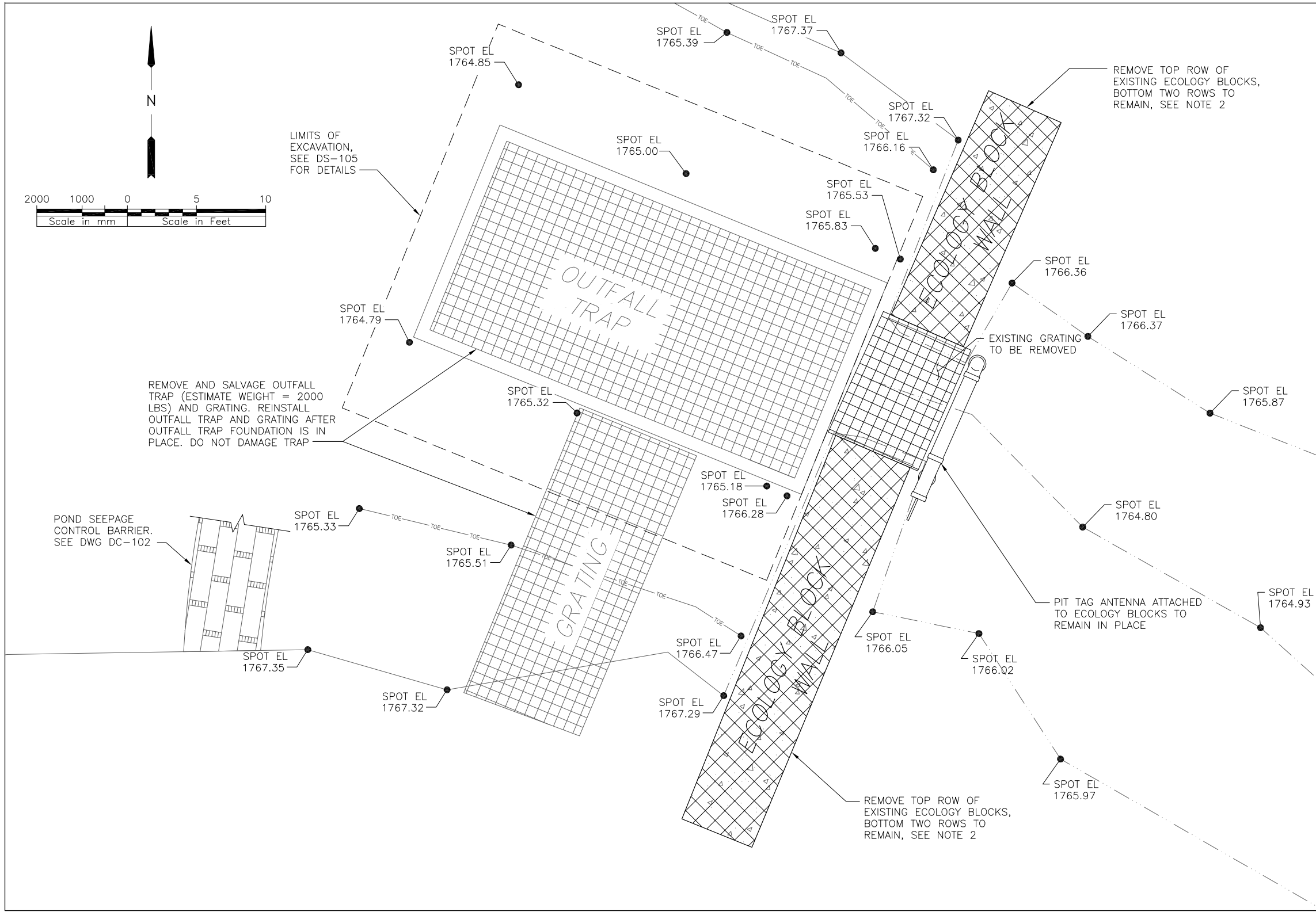
POND DEWATERING PLAN

NOTES:

1. TOPOGRAPHIC SURVEY INFORMATION PROVIDED BY ERLANDSEN (210 N. BRIDGE ST. BREWSTER, WA 98812) WITH ELEVATIONS DERIVED FROM GPS AND TPS OBSERVATIONS PERFORMED ON FEBRUARY 3, 2016. HORIZONTAL DATUM NAD83/91 WASHINGTON STATE PLANE - NORTH ZONE. VERTICAL DATUM NGVD 1929.
2. EXPECTED STREAM FLOW= 1000 GPM.
3. DISTRICT HAS LOCAL POWER FOR ELECTRIC SUBMERSIBLE PUMP. POWER SUPPLY LIMITED TO 220V, 60 AMP CIRCUIT BREAKER.
4. USE ENERGY DISSIPATING STRUCTURE AT END OF DIVERSION PIPE TO PREVENT EROSION OF STREAM BED. STRUCTURE CAN BE PLYWOOD OR SANDBAGS ON STREAM BED.

ISSUED FOR CONSTRUCTION	RWR	DLA	JMS		
REV. NO. 11/23/16	REV. DATE	REVISION DESCRIPTION	BY	CHK	JOB ENG
Public Utility District No. 1 of Douglas County			WELLS HYDROELECTRIC PROJECT		
METHOW SPRING CHINOOK HATCHERY			OUTFALL ADULT TRAP MODIFICATIONS		
POND DEWATERING PLAN			DESIGNED: JMS DRAWN: RWR CHECKED: DLA DATE: 11/2016 REVISION: 0		
JACOBS			DRAWING NUMBER: X643-06-6200-DC-102		
			SCALE: 1/4" = 1'-0" SH. 02 OF 06		

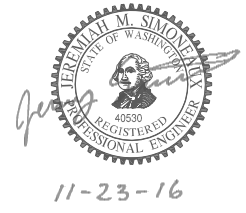


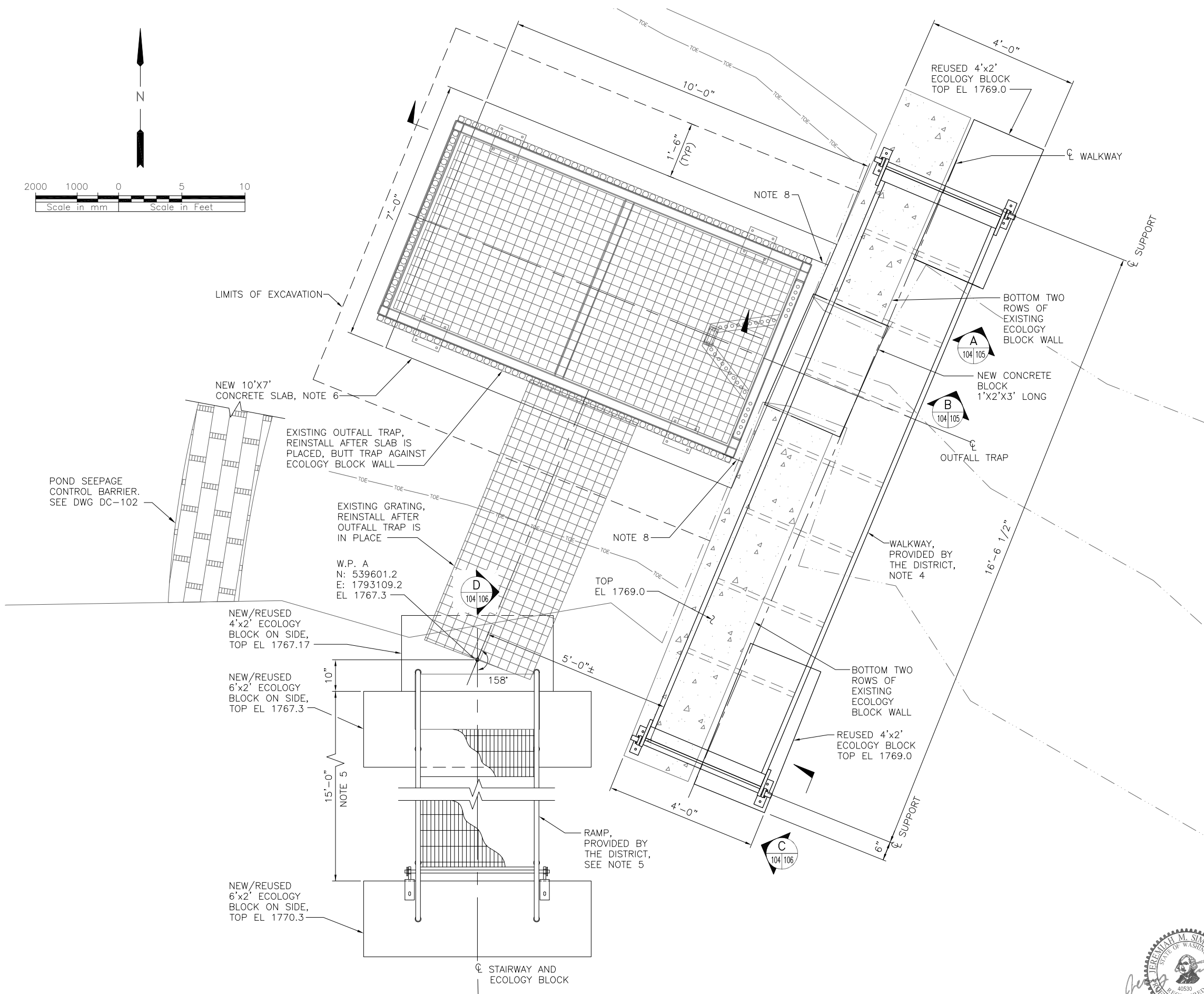
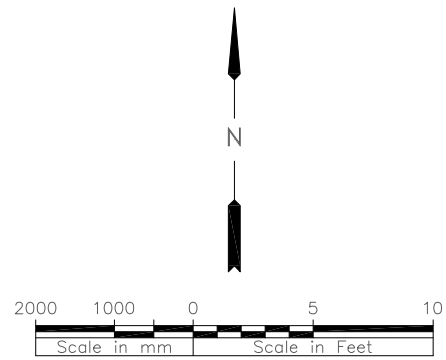


- NOTES:**
- DO NOT START DEMOLITION UNTIL HATCHERY OUTFALL FLOW REROUTED AND NATURAL POND SEEPAGE IS STABILIZED. SEE DRAWING DC-102 FOR DEWATERING PLAN.
 - ECOLOGY BLOCK WALL CONSISTS OF 6- 2'x2'x6' BLOCKS AND 3- 2'x2'x4' BLOCKS. RE-USE ECOLOGY BLOCKS AS SHOWN IN THESE DRAWINGS. COORDINATE WITH DISTRICT FOR ADDITIONAL ECOLOGY BLOCKS.

DEMOLITION PLAN

ISSUED FOR CONSTRUCTION	RWR	DLA	JMS		
REV. NO. 11/23/16	REV. DATE	REVISION DESCRIPTION	BY	CHK	JOB ENG
Public Utility District No. 1 of Douglas County			WELLS HYDROELECTRIC PROJECT		
METHOW SPRING CHINOOK HATCHERY			OUTFALL ADULT TRAP MODIFICATIONS		
DEMOLITION PLAN			DESIGNED: JMS DRAWN: RWR CHECKED: DLA DATE: 11/2016 REVISION: 0		
JACOBS			DRAWING NUMBER: X643-06-6200-DC-103		
			SCALE: 3/4" = 1'-0" SH. 03 OF 06		





PLAN

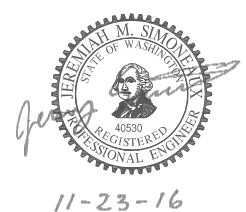
NOTES:

1. THE NEW WORK CONSISTS OF MODIFYING ECOLOGY BLOCK WALL, A SLAB FOR THE EXISTING OUTFALL TRAP, A WALKWAY, A RAMP, AND A CONCRETE SLAB BLOCK.
2. HORIZONTAL DATUM: NAD 83/91
VERTICAL DATUM: NGVD 1929
3. HORIZONTAL LOCATION OF ALL NEW COMPONENTS SHALL BE BASED ON W.P. A.
4. WALKWAY TO BE PROVIDED BY THE DISTRICT AND INSTALLED BY THE CONTRACTOR ON NEW WALKWAY SUPPORTS.
5. RAMP TO BE PROVIDED BY THE DISTRICT AND INSTALLED BY THE CONTRACTOR ON NEW RAMP SUPPORTS.
6. OUTFALL TRAP SHALL BE SUPPORTED BY CONCRETE SLAB AS SHOWN OR A PAIR OF BOAT LAUNCH PLANKS. BOAT LAUNCH PLANKS SHALL BE PRECAST 12'-0" LONG BY 4'-0" WIDE. BOAT PLANK FOOTPRINT SHALL BE 12'-0"x8'-0".
7. ANY DISTURBED SOIL SHALL BE RETURNED TO ITS ORIGINAL CONDITION UPON COMPLETION OF WORK.
8. DISTRICT TO INSTALL ALUMINUM FLASHING ON EACH SIDE OF OUTFALL TRAP TO CLOSE TRAP/WALL GAP. SCREW FLASHING TO TRAP USING ALUMINUM SCREWS.

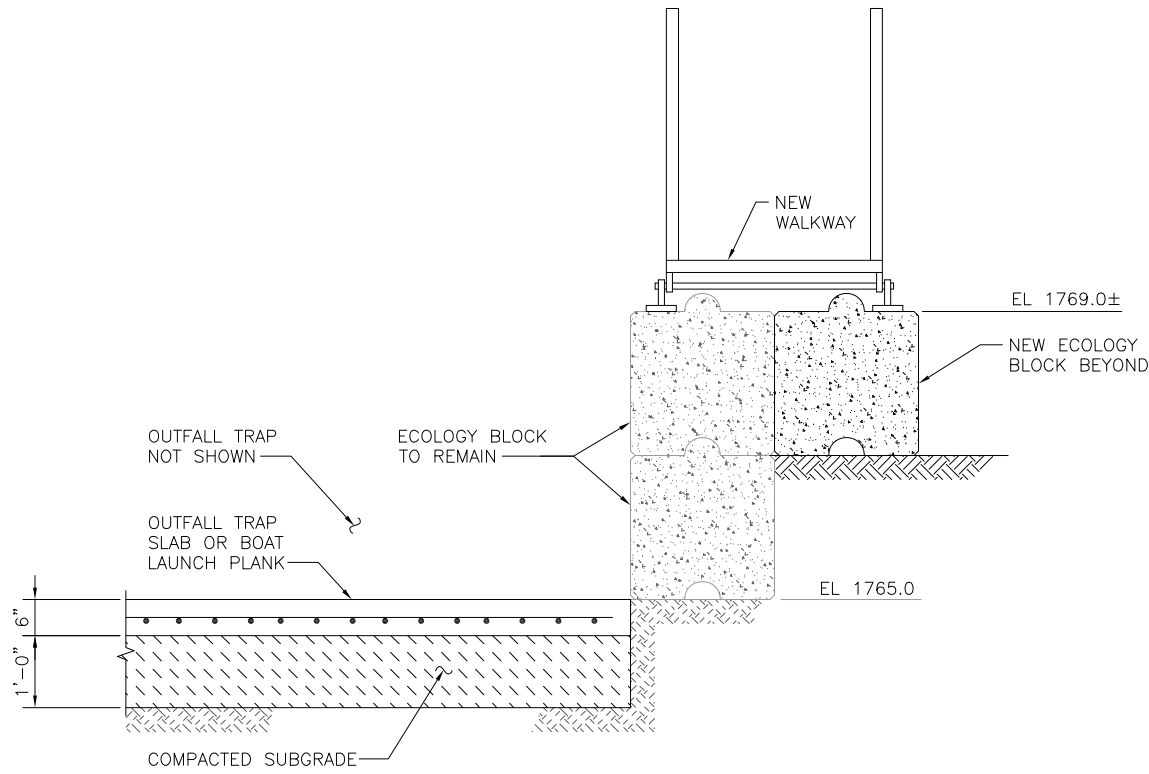
DETAILING CONVENTIONS

DETAIL
1/4" = 1'-0"

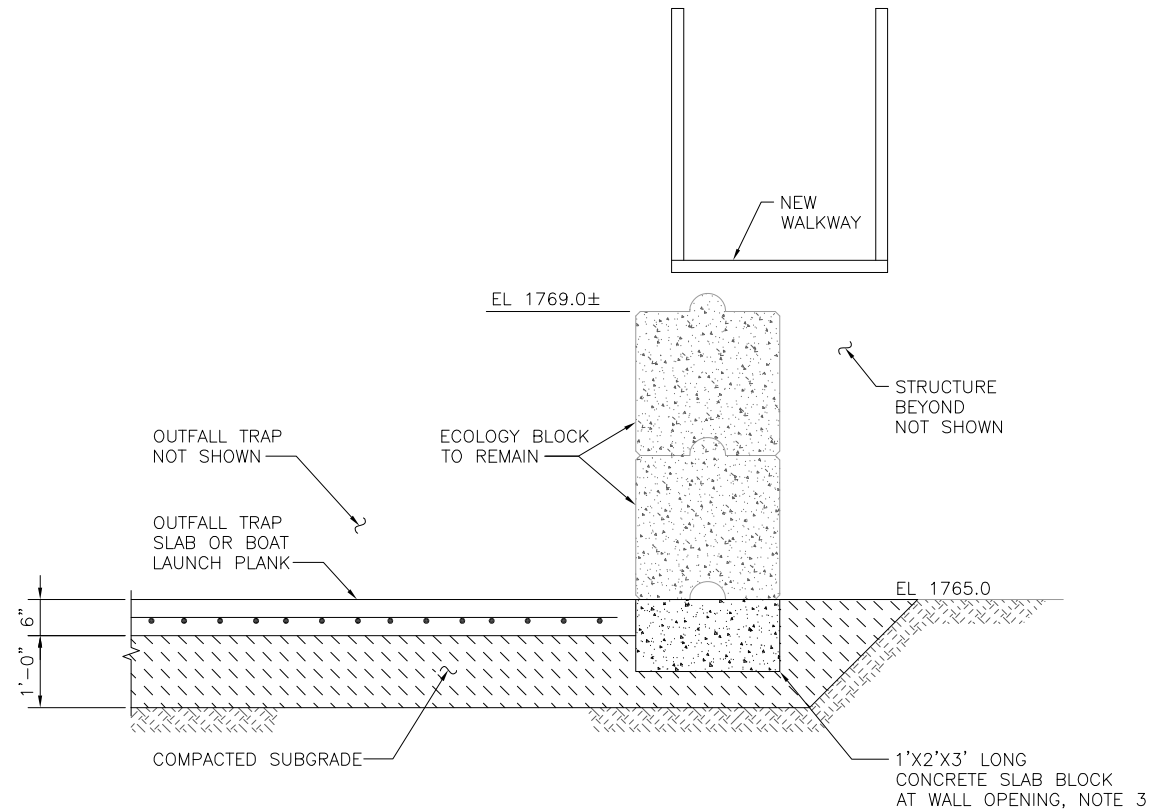
ISSUED FOR CONSTRUCTION	EDG	DLA	JMS		
REV. NO. 11/23/16	REV. DATE	REVISION DESCRIPTION	BY	CHK	JOB ENG
Public Utility District No. 1 of Douglas County			WELLS HYDROELECTRIC PROJECT		
METHOW SPRING CHINOOK HATCHERY			OUTFALL ADULT TRAP MODIFICATIONS		
GENERAL ARRANGEMENT			DESIGNED: JMS DRAWN: EDG CHECKED: DLA DATE: 11/2016 REVISION: 0		
DRAWING NUMBER: X643-06-6200-DC-104			SCALE: 3/4" = 1'-0" SHT. 04 OF 06		



11-23-16




SECTION A
3/4" = 1'-0"



SECTION B
3/4" = 1'-0"

NOTES:

1. CONCRETE SHALL BE $f'_c=4000$ PSI AT 28 DAYS (NORMAL WEIGHT CONCRETE) AND SHALL CONFORM TO CURRENT ACI MANUAL OF STANDARD PRACTICE AND LATEST EDITION OF ACI 318.
2. SUBGRADE SHALL BE STRUCTURAL FILL THAT CONFORMS TO "AGGREGATE FOR GRAVEL BASE" PER WSDOT STANDARD SPECIFICATION SECTION 9-03.10. SUBGRADE SHALL BE COMPACTED TO 95 PERCENT STANDARD DENSITY.
3. CONCRETE SLAB BLOCK SHALL BE UNREINFORCED AND MAY BE CAST DIRECTLY AGAINST EXISTING SOIL/NEW SUBGRADE. THE UPSTREAM FACE OF BLOCK SHALL BE FORMED TO PROVIDE FITUP WITH OUTFALL TRAP SLAB.

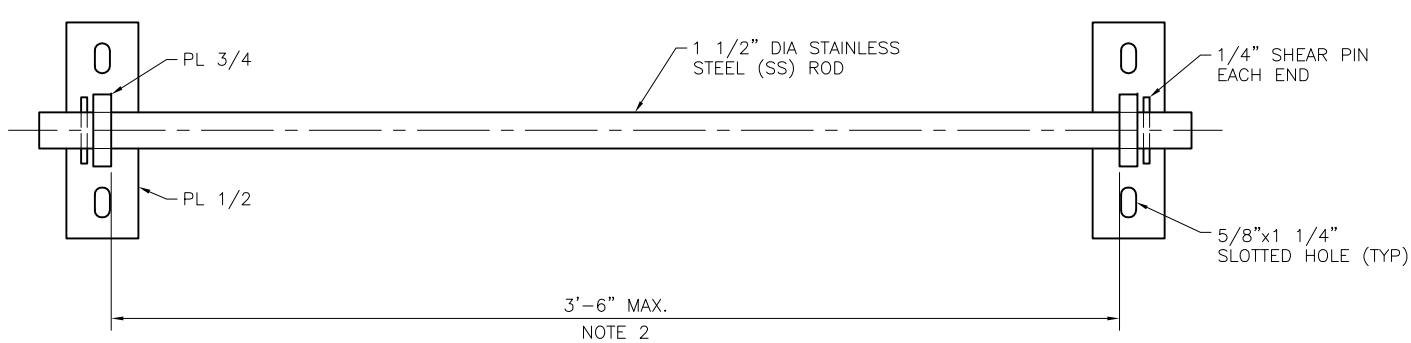
0	11/23/16	ISSUED FOR CONSTRUCTION	EDG	DLA	JMS		
REV. NO.	REV. DATE	REVISION DESCRIPTION	BY	CHK	JOB ENG	ENG PROJ	ENG
Public Utility District  No. 1 of Douglas County							
WELLS HYDROELECTRIC PROJECT METHOW SPRING CHINOOK HATCHERY							
OUTFALL ADULT TRAP MODIFICATIONS SECTIONS - 1							
DESIGNED:	JMS	DRAWN:	EDG	CHECKED:	DLA	DATE:	11/2016
DRAWING NUMBER:		X643-06-6200-DS-105					
SCALE:		AS NOTED					
SHT. 05		OF 06					



11-23-16

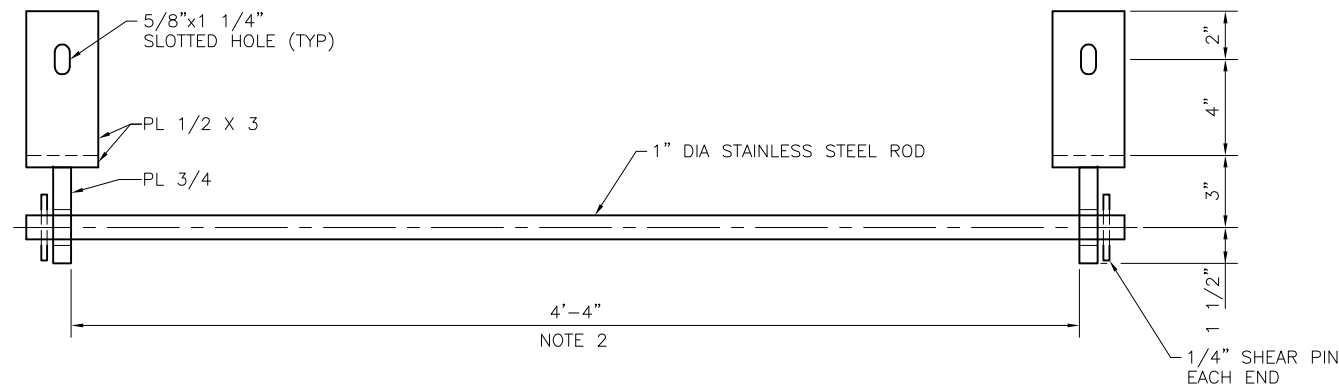
LAST PLOT: 11/23/2016 11:17 AM

P:\WSX643\06 FISH ISSUES\6200 2016 METHOW HATCHERY OUTFALL TRAP MODIFICATIONS\700CADD\740WORK\X643-06-6200-DS-106.DWG



WALKWAY SUPPORT (2 REQUIRED)

SECTION E
3" = 1'-0"

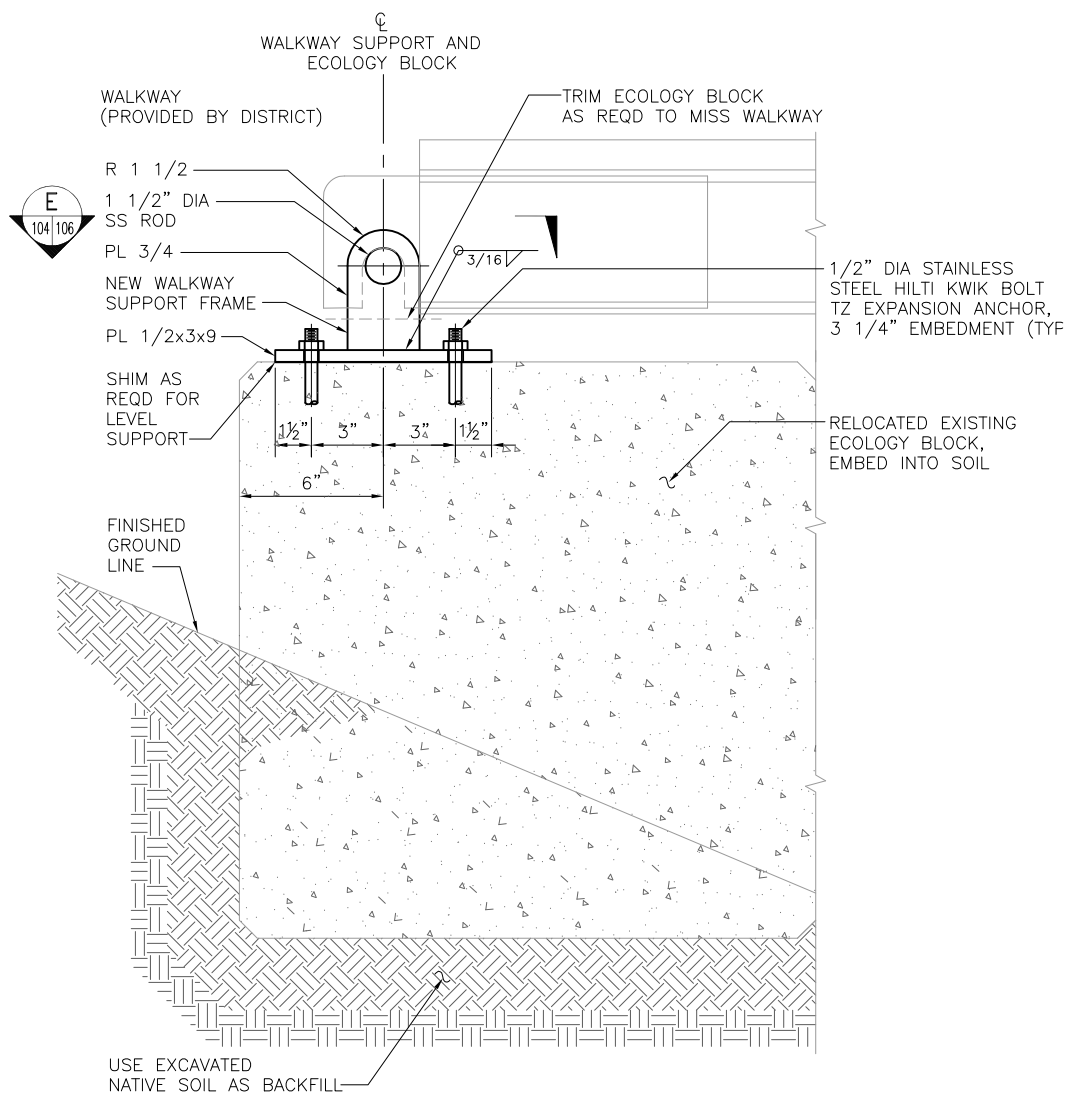


RAMP SUPPORT (1 REQUIRED)

SECTION F
3" = 1'-0"

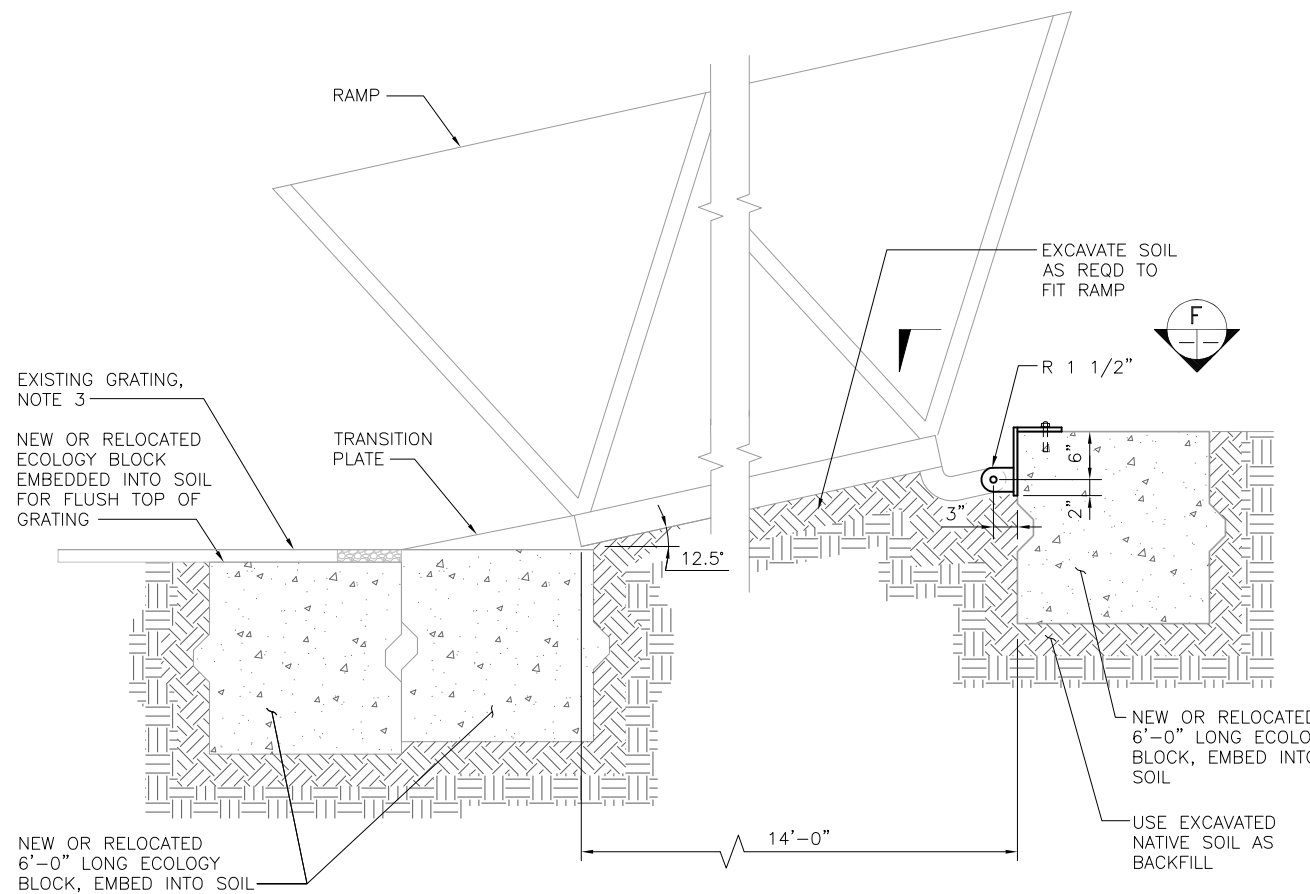
NOTES:

1. STEEL SHALL BE GALVANIZED AND CONFORM TO ASTM A36, GRADE 36 UNLESS OTHERWISE INDICATED. STAINLESS STEEL SHALL BE TYPE 304.
2. COORDINATE WIDTH WITH ACTUAL WALKWAY/RAMP OUT-TO-OUT DIMENSIONS TO PROVIDE LEAST AMOUNT OF CLEARANCE BETWEEN SUPPORT PLATES.
3. EXISTING GRATING RESET ON 4'x2' NEW/REUSED ECOLOGY BLOCK APPROX. 8" OFF LOWER 6'x2' NEW/REUSED ECOLOGY BLOCK AT CENTERLINE. COMPACT NATIVE SOIL TO LEVEL TOP OF GRATING WITH TOP OF LOWER 6'x2' REUSED ECOLOGY BLOCK.



WALKWAY

SECTION C
3" = 1'-0"



RAMP

SECTION D
1" = 1'-0"

REV. NO.	REV. DATE	ISSUED FOR CONSTRUCTION	EDG	DLA	JMS	ENG PROJ	ENG
0	11/23/16						
REVISION DESCRIPTION			BY	CHK	JOB ENG	ENG PROJ	ENG
Public Utility District No. 1 of Douglas County							
WELLS HYDROELECTRIC PROJECT METHOW SPRING CHINOOK HATCHERY							
OUTFALL ADULT TRAP MODIFICATIONS SECTIONS - 2							
DESIGNED:	JMS	DRAWN:	EDG	CHECKED:	DLA	DATE:	11/2016
DRAWING NUMBER:		X643-06-6200-DS-106					
SCALE:		AS NOTED					
SHT.		06 OF 06					

