

## Pateros

### Peninsula Park-

Located near the confluence of the Methow and Columbia rivers. It includes one gazebo, paved walking path, covered picnic shelter, swimming beach, restroom facilities, playground equipment, swimming lagoon, vehicle parking and lawn area.

### Memorial Park-

Located in Pateros along the Columbia River. It includes three covered picnic shelters, fishing and boat docks, vehicle parking, interpretive displays, playground equipment, concrete water access ramp, restroom facilities and a developed waterfront trail with park benches and lighting. The waterfront trail begins at the east end of Memorial Park near City Hall and meanders through the park, under the Highway 97 Bridge and terminates at the Methow Boat Launch.

### Ives Landing Boat Launch-

Located upstream of Memorial Park along the Columbia River. The site includes a concrete boat launch, dock and parking. This boat launch provides year-round access to the Wells Reservoir, including winter when the Methow Boat Launch may be unusable due to ice.

### Methow Boat Launch-

Located between Peninsula Park and Memorial Park at the confluence of the Columbia and Methow rivers. The site includes a concrete boat launch and dock, parking, basketball hoops and restrooms. The boat launch area is connected to Memorial Park via a paved walkway underneath Highway 97 and the railroad bridge.

### Riverside Drive Recreation Access-

Located along the left bank of the Methow River, upstream from Peninsula Park. The site includes a gradual landscaped access to the Methow River for fishing, kayaking, or canoeing.

## Brewster

### Columbia Cove Park-

Located within the City of Brewster. The site includes a boat launch, boat docks, three covered picnic shelters, a swimming beach, restroom facilities, playground equipment, a lawn area, and vehicle parking.

### Brewster Waterfront Trail-

Located north of Columbia Cove Park and consists of a compacted gravel surface that extends approximately ½ mile along the Brewster city waterfront. The trail is generally 6 to 8 feet above the water level and 20 feet

or more below adjacent streets and residential areas. It is connected to city streets at either end by ramps and at three intermediate locations by stairs. It is lighted and has benches.

## Bridgeport

### Marina Park-

Located in Bridgeport along the Columbia River. The site includes an RV campground, covered picnic shelters, gazebo, playground equipment, swimming lagoon with beach, swim dock, a lawn area, restrooms, vehicle parking, asphalt pathway and a boat launch. The RV campground includes 18 full hookups and four tent sites.

### Conklin Landing Boat Launch-

Located in Bridgeport downriver from Marina Park. The site includes a double lane boat launch and handling float, public restroom and parking for 56 truck and trailer vehicles.

## Recreation Sites Outside the Cities

In addition to the facilities in Pateros, Brewster and Bridgeport, Douglas PUD has developed additional recreation sites to provide access to all areas of the Wells Reservoir.

### Wells Dam Overlook-

A viewing area overlooking Wells Dam from the west is located off of Highway 97. The site includes vehicle and day-use RV parking, restrooms and a picnic shelter. Exhibits at the Overlook include Native American pictographs, a Wells Project information kiosk and an original Wells Project turbine runner. New exhibits will be added in 2015. The Wells Dam Overlook is accessible 24-hours a day.

### Starr Boat Launch-

Located on the right bank of the Wells Reservoir near RM 518. It is accessible via Highway 97. The site includes a gravel parking area, concrete boat launch and vault toilet.

### Water Trails Campsite-

Located on the left bank of the Wells Reservoir near RM 517.5. The site is comprised of two 8'x8' tent pads for overnight use by paddlers only. There are no other facilities at the site.

### Methow Fishing Access-

Located off of State Highway 153 approximately ½ mile from Highway 97 at the confluence of the Columbia and Methow rivers. The site includes a gravel car-top boat launch, gravel parking area and two vault toilets.

### Chicken Creek Boat Launch-

Located near RM 537 at Washburn Island where Chicken Creek flows into the Washburn Pond. The site includes a concrete plank boat launch, gravel parking lot and vault toilet. The boat launch provides access to the Washburn Pond but not the Wells Reservoir.

### Monse Bridge Boat Launch-

Located on the right bank of the Okanogan River at RM 4.7. Facilities at the boat launch include a concrete plank launching ramp, gravel parking and a vault toilet. This shallow access is most suitable for small boats.

### Cassimer Bar Fishing Access-

Located on the left bank of the Okanogan River near RM 1. The site is in close proximity to the Highway 97 Bridge near the confluence of the Okanogan and Columbia rivers. This site includes shoreline access, a parking area, and a vault toilet and is featured in The Great Washington State Birding Trail Cascade Loop.

### Okanogan River Gravel Boat Launch-

Located on the right bank of the Okanogan River at RM 2.5. Public access to the site is available via Monse River Road off of Highway 97. This undeveloped area serves as a boat launch primarily for fishermen and waterfowl hunters. This site also provides shoreline fishing access. This shallow access is most suitable for small boats.

### Okanogan River Gravel Boat Launch-

Located on the right bank of the Okanogan River at RM 6.7. Public access to the site is available via Monse River Road. This undeveloped area serves as boat launch for waterfowl hunters and fishermen. This site also provides shoreline fishing access. This shallow access is most suitable for small boats.



Reservoir Wildlife

\*RM = River Mile



Wells Dam Overlook



Brewster Waterfront Trail



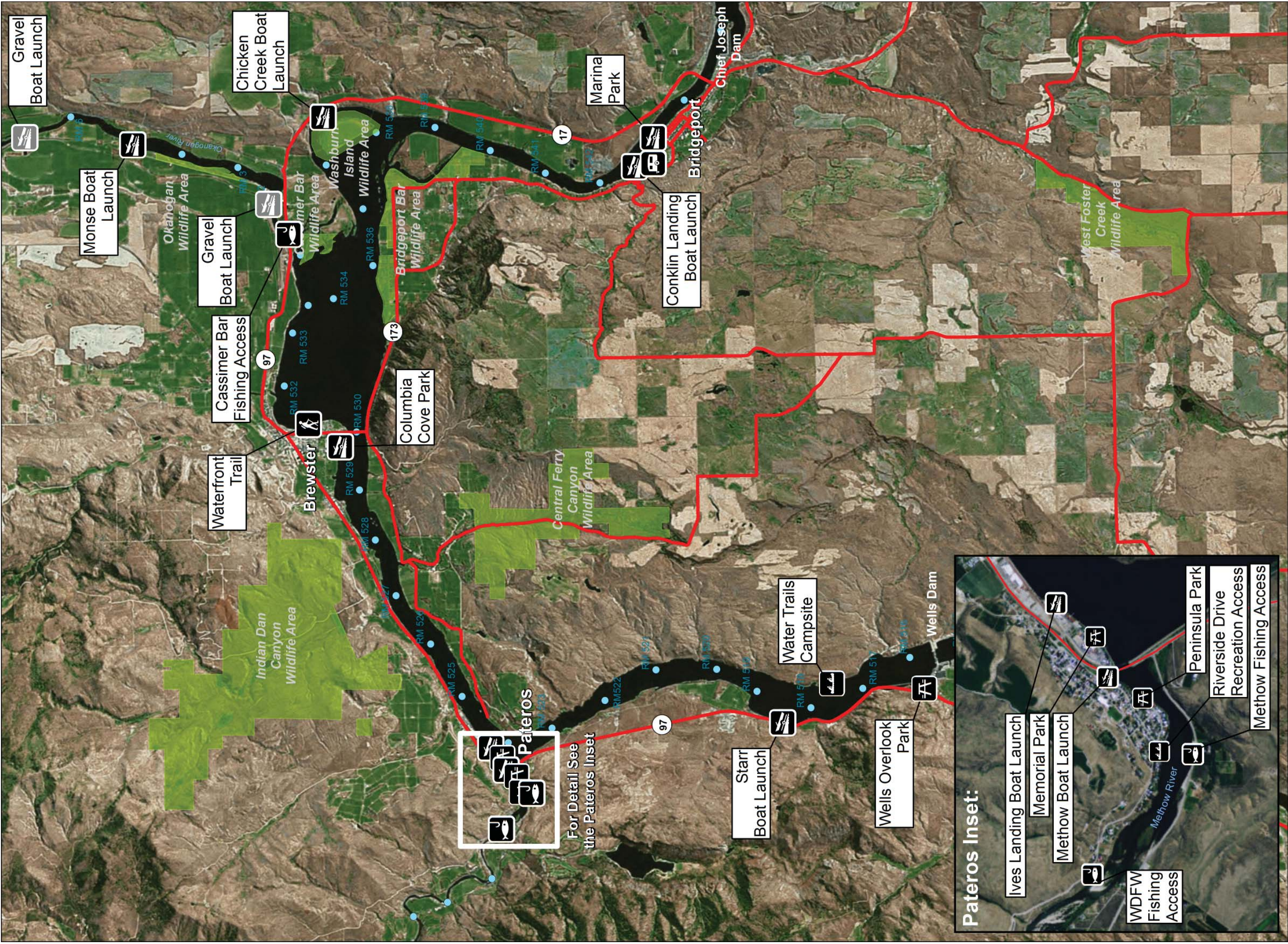
Pateros Memorial Park



Bridgeport Marina Park

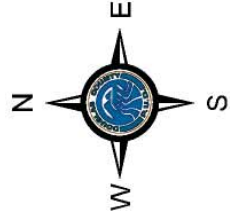
# Wells Reservoir Recreation





### Recreation Sites on the Wells Hydroelectric Project

- Boat Launch
- Fishing Access
- RV Camping
- Park
- Gravel Boat Launch
- Riverside Drive Recreation Access
- Waterfront Trail
- Wells Project Wildlife Areas
- River Mile (RM)



### CAUTION!

- Columbia River water levels change rapidly.  
Boater must exercise due care when launching and piloting boats.
- You may encounter:
- Shallow water,
  - Submerged objects,
  - Floating debris,
  - Strong currents,
  - Waves and high winds.

For Detail See the Pateros Inset

