

What is the DCCN?

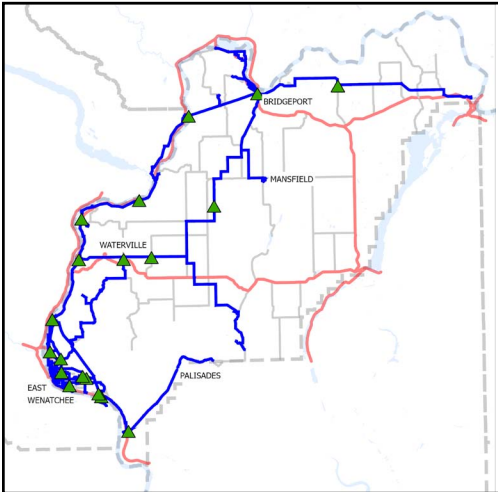
The Douglas County Community Network (DCCN) is a high-speed, broadband communication network. It was originally designed for Douglas County PUD's electric system. The current network, in development since 1999, includes hundreds of miles of fiber-optic lines, connecting several communities throughout Douglas County.

This network enables Douglas County PUD to safely and effectively monitor and control its electric system.

An added benefit is the availability of high-speed broadband services, such as Internet, phone, and television available to residents and businesses in Douglas County.

By state law, the PUD cannot sell broadband services directly to end users. PUDs are required to sell wholesale connections to Internet Service Providers (ISP). The ISPs, in turn, retail those connections to end users.

This community network positions rural Douglas County to thrive in the high-tech future.

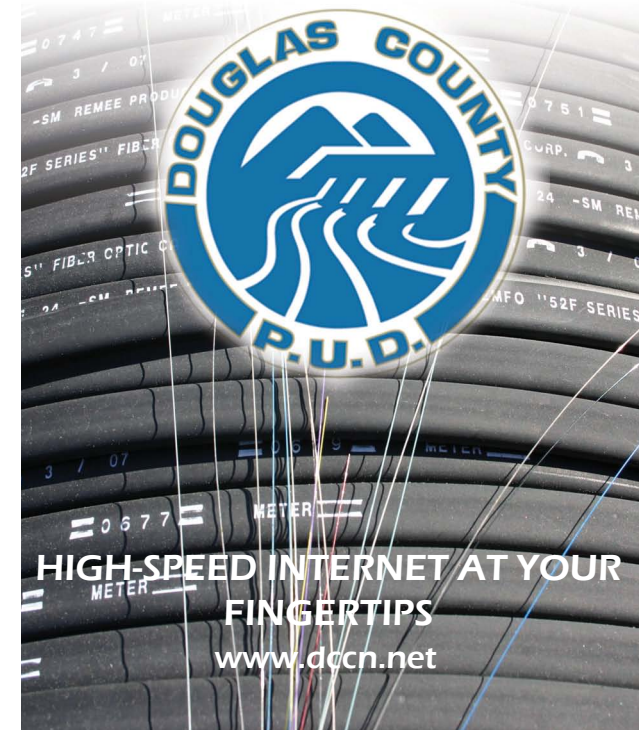


Douglas County Community Network



**Douglas County PUD No. 1
1151 Valley Mall Parkway
East Wenatchee, WA 98802**

**Phone (509) 884-7191
Fax (509) 884-0553
www.dccn.net**



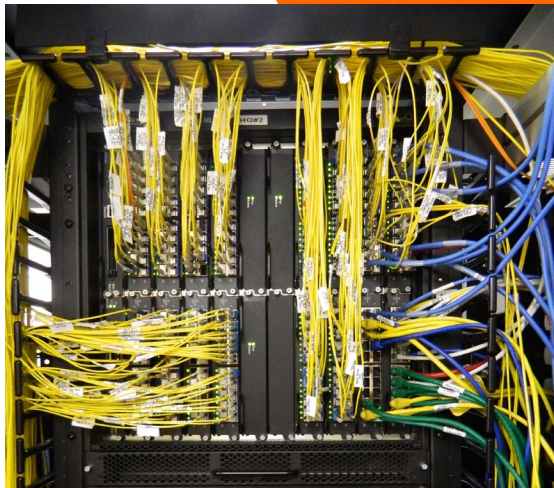
**HIGH-SPEED INTERNET AT YOUR
FINGERTIPS
www.dccn.net**

What is Broadband?

The term broadband refers to high bandwidth data connections to the Internet. Bandwidth is the amount of data that can be transmitted across a connection. For example, these dots graphically represent:

- Digital Subscriber Line (DSL) = 24 Million bps
- Cable Broadband = 60 Million bps
- **DCCN = 1,000 Million bps***
(see orange background dot)

A DCCN connection provides 17 times more bandwidth than cable broadband and 42 times more than DSL!



*Does not include wireless connections.

High-Speed Internet at your Fingertips

Douglas County PUD operates a high-speed communication network in Douglas County. Getting connected is easy using two simple steps:

- 1 Select an Internet Service Provider (ISP) from the list below.**
- 2 Make a network connection request with the ISP.**

The ISP will then:

- ✓ Contact Douglas PUD to determine the requirements to connect your address.
- ✓ Coordinate with Douglas PUD for installation of equipment on home.
- ✓ Arrange to connect the inside of your home to the network connection box on the outside of your home or business.
- ✓ Inform you when you're ready to start enjoying the speed of the DCCN.

Internet Service Providers

(check www.dccn.net for most current providers)

Internet Phone Television

iFiber Communications
ifiber.tv
1-866-284-3842

LocalTel
nwinternet.com
509-888-8888

Wholesale Networks
wholesalenetworks.com
206-777-7770

Native Network
nativenetwork.com
1-844-816-8904

Odessa Office Equipment
odessaoffice.com
509-982-2181

509Fiber
509fiber.com
509-434-9011

North Ridge
atnorthridge.com
833-678-4734

Star Touch Broadband
startouch.com
1-888-733-0203

Frequently Asked Questions

How much does it cost to get connected to the DCCN?



New connections in serviceable areas currently require a \$150 new connection fee. Connections outside of serviceable areas will still require a 100% contribution in aid of construction.

What equipment do I need to connect to the DCCN? Is my computer ready for broadband now?

Contact your ISP for specific information and recommendations. Most computers manufactured since 2005 have the proper equipment for a broadband connection. Douglas PUD also strongly recommends use of a firewall and up-to-date anti-virus software.

Who do I call if I have problems with my DCCN connection?

You should contact your ISP. They have support staff trained to diagnose problems over the phone. If it appears there is a problem with the DCCN, the service provider will contact Douglas PUD to request the appropriate action.

Check out www.dccn.net

- Installation Videos
- Serviceability Maps
- Service Provider Information
- and MORE