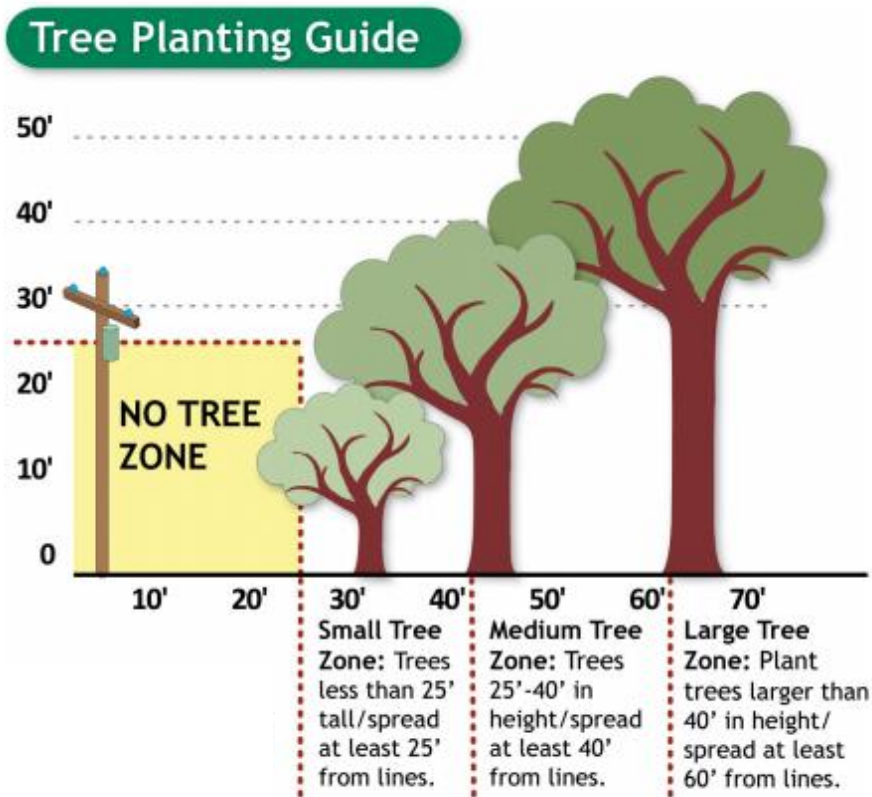


Tree Planting and Pruning

For information about tree planting and pruning, contact the Douglas County PUD Distribution Superintendent at (509) 881-2259



WHEN PLANTING AROUND TRANSFORMERS, JUNCTION BOXES, VAULTS AND HANDHOLES (ELECTRICAL OBJECTS), PLEASE OBSERVE THE FOLLOWING GUIDELINES:

Maintain **12'** of clearance between plantings and objects and the **FRONT** of the electrical object

Maintain **3'** of clearance between plantings and objects and the **SIDES** and **BACK** of the electrical object

